

Model Question of SSC Examination 2016 All Board
Sub: Biology (Creative)

Time: 2 Hours 10 minutes

Total Marks-40

(Answer any four of the following Questions)

1.▶

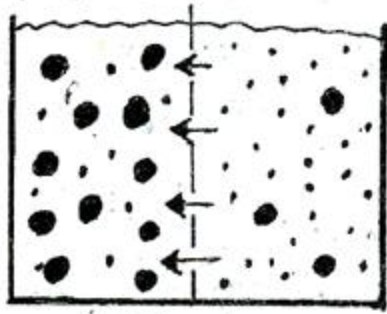
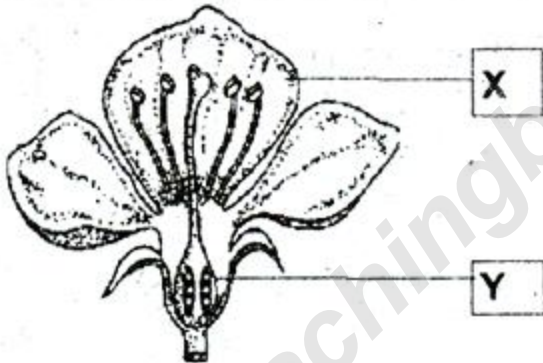


Fig-A

- What is active absorption? 1
- What is hydrophilic substance? Explain. 2
- Process of Fig-A is a special type of diffusion-discuss the reason. 3
- Process of Fig-A is very much important for plant-Analyze.4

2.▶

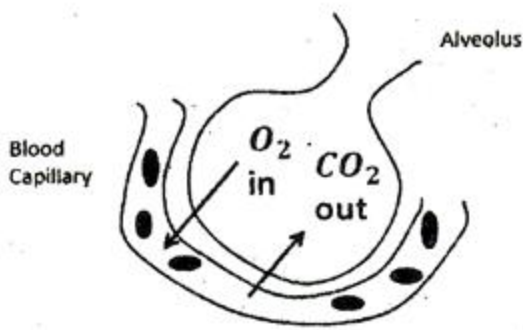


- What is thalamus? 1
- Describe about inflorescence. 2
- How does the part-X play role in pollination? 3
- Part-Y saves the life of animal-analyze with logic. 4

3.▶ Mr. Rafi wants to establish a papaya garden. For this purpose he gave a supply order to Biotechnology lab for supplying 200 papaya seedlings. Within short time he got the seedlings.

- What is Biotechnology? 1
- Describe about embryo culture. 2
- Explain the procedure of lab. 3
- The impact of above procedure in agriculture is immense-analyze. 4

4. ▶



- What is synovial joint? 1
- What do you mean by Osmoregulation? 2
- Write down the symptoms and causes of two diseases associated with above system? 3
- How oxygen and carbon dioxide are exchange through the figure? 4

5. ▶ Pinky is a garments workers. Last year she married with auto rickshaw driver Keshor. Now days she fells headache, heartburn, distaste for certain foods, rapid loss of body weight and suffer from fever for more than one month. She went to medical center. Doctor gives her some test. After diagnosis doctor told her she has been pregnant and HIV positive.

- What is pituitary gland? 1
- What do you mean by tendon and ligament? 2
- Write down causes of Pinky's disease? 3
- Describe the changes of embryo in uterus of Pinky. 4

6. ▶ The digestive system consists of alimentary canal and the digestive glands. Alimentary canal consists with many parts. Stomach is a one of the parts of Alimentary canal. It is bag like organ located in between the oesophagus and small intestine. Digestive glands secret enzyme takes part in the digestion of food. It includes liver, pancreas etc. Liver is largest gland of body and deep brown in color.

- What is blood pressure? 1
- What do you mean by dyspepsia? 2
- Write down food digestion in bag like part of alimentary canal? 3
- Describe the brown color gland. 4

Model Question of SSC Examination 2016 All Board

Sub: Biology (MCQ)

Time: 35 minutes

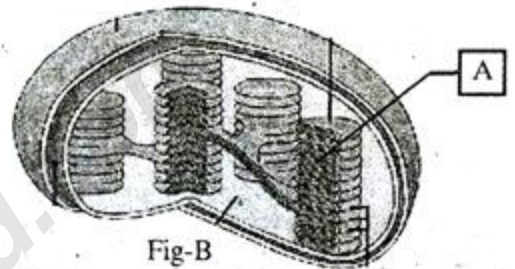
Total Marks- 35

[Darken the circle (O) of the correct option from the following alternatives]

- Histone protein found in —
 (a) Chromosome (b) Golgi bodies
 (c) Ribosome (d) Lysosome
- Which one consists of lipid and protein?
 (a) Plasma lemma (b) Cell wall
 (c) Chromosome (d) Nucleus
- Where does the ovule lies?
 (a) in ovary (b) in seed
 (c) in nucellus (d) in gynoecium
- Which one is internal factor of photosynthesis?
 (a) CO_2 (b) water
 (c) Oxygen (d) Potassium
- Chemical component of cell wall—
 i. Cellulose
 ii. Pectin
 iii. Suberin
 Which one is correct?
 (a) i & ii (b) i & iii
 (c) ii & iii (d) i, ii & iii
- Which process keep tolerable temperature in plant?
 (a) Osmosis (b) Diffusion
 (c) Transpiration (d) Ascent of sap
- First stable compound of C_3 plants is —
 (a) Oxaloacetic acid
 (b) 3-phosphoglyceraldehyde
 (c) 3-phosphoglyceric acid
 (d) DHAP
- Which are the cross pollinated plants —
 (a) Cucumber, Datura
 (b) Cucumber, Turnips
 (c) Papaya, Datura
 (d) Chinese hibiscus, Cotton
- Which element takes part forming chlorophyll?
 (a) N (b) P
 (c) K (d) Ca

- Which one is polydelphous?
 (a) Cotton (b) Datura
 (c) Rose (d) Chinese hibiscus
- Which one stimulates cell division?
 (a) auxin (b) gibberellins
 (c) ethylene (d) cytokinin
- How many FADH_2 will form from 10 glucose molecules in Krebs cycle?
 (a) 10 (b) 20
 (c) 30 (d) 40

Answer 13-14 from the given stem



- Which one produces in Part-A?
 (a) glucose
 (b) ATP
 (c) Ribulose 1, 5 bis phosphate
 (d) FADH_2
- Fig-B perform well in —
 i. red light ii. yellow light
 iii. orange light
 Which one is correct?
 (a) i & ii (b) i & iii
 (c) ii & iii (d) i, ii & iii
- Lenticel consists of—
 i. Cortex
 ii. Epidermis
 iii. Complimentary cell
 Which one is correct?
 (a) i & ii (b) i & iii
 (c) ii & iii (d) i, ii & iii

Answer 16-17 from the given stem—

Salim is suffering from a genetic blood disease. The main symptom of this disease is anemia.

- How many babies are born in Bangladesh with Salim's problem?
 (a) 5000 (b) 6000
 (c) 7000 (d) 8000

17. The treatment of Salim's disease—
 i. Taking iron rich fruits
 ii. Not taking iron rich fruits
 iii. Blood transfusion
 Which one is correct?
 (a) i & ii (b) i & iii
 (c) ii & iii (d) i, ii & iii
18. How many renal tubules are found in kidney?
 (a) 2 millions (b) 3 millions
 (c) 4 millions (d) 5 millions
19. Stones can be removed by—
 i. Uteroscopic
 ii. Ultra sonic lithtripsi
 iii. Surgical operation
 Which one is correct?
 (a) i (b) ii
 (c) iii (d) i, ii, & iii
20. The apex of each kidney pyramid is called
 (a) Papilla (b) Renal Pyramid
 (c) Pelvis (d) Ureter
21. Which one is the right arrange of teeth?
 (a) Incisor → canine → premolar → molar
 (b) Canine → Incisor → Premolar → molar
 (c) Incisor → canine → molar → premolar
 (d) Canine → Incisor → molar → premolar
22. Formalin is used in —
 i. Developing colored photo
 ii. Preservation of dead body
 iii. Preservation of fish milk
 Which one is correct?
 (a) i (b) ii
 (c) iii (d) i, ii & iii
23. Ptyalin is secreted from —
 (a) Stomach (b) Duodenum
 (c) Liver (d) Salivary Gland
24. Which one is called the organic laboratory?
 (a) Pancreas (b) Liver
 (c) Stomach (d) Spleen
25. Glucose is controlled by—
 (a) Amylase (b) Lipase
 (c) Trypsin (d) Insulin
26. How many red blood corpuscles are produced in every second?
 (a) 5.0 million (b) 4.0 million
 (c) 3.0 million (d) 2.0 million
27. In male how much m mol/L of LDL is found—
 (a) 1.28-4.33 (b) 1.38-4.53
 (c) 1.48-4.63 (d) 1.68-4.53
28. Fat soluble vitamin are—
 i. A ii. B
 iii. E
 Which one is correct?
 (a) i & ii (b) ii & iii
 (c) i & iii (d) i, ii & iii
29. Gall stone is caused due to—
 (a) sediment of sulphar
 (b) sediment of bile
 (c) sediment of amino acid
 (d) sediment of cholesterol
30. Streptococcus is responsible for—
 (a) Rheumatic fever
 (b) Pneumonia
 (c) Asthma
 (d) Tuberculosis
31. Which one is branch of applied biology?
 (a) Genetics
 (b) Biogeography
 (c) Embryology
 (d) Soil science
32. Valve is found in wall of—
 i. Artery
 ii. Capillary
 iii. Vein
 Which one is correct?
 (a) i (b) ii
 (c) iii (d) i, ii & iii
33. Nephritis is related to disease of —
 (a) Heart (b) Brain
 (c) Liver (d) Kidney
34. Squamous epithelial tissue is found in —
 (a) Lungs (b) Kidney
 (c) Liver (d) Stomach
35. Segela is responsible for —
 (a) Dyspensia (b) Dysentery
 (c) Constipation (d) Diarrhea

1	(a)	2	(a)	3	(b)	4	(d)	5	(d)	6	(c)	7	(c)	8	(d)	9	(a)	10	(a)	11	(d)	12	(b)	13	(b)	14	(b)	15	(c)	16	(c)	17	(c)	18	(a)	19	(d)	20	(a)
21	(a)	22	(d)	23	(d)	24	(b)	25	(d)	26	(d)	27	(d)	28	(c)	29	(d)	30	(a)	31	(d)	32	(c)	33	(d)	34	(b)	35	(b)										