

Model Question of SSC Examination 2016 All Board  
Sub: Biology (Creative)

Time: 2 Hours 10 minutes

Total Marks-40

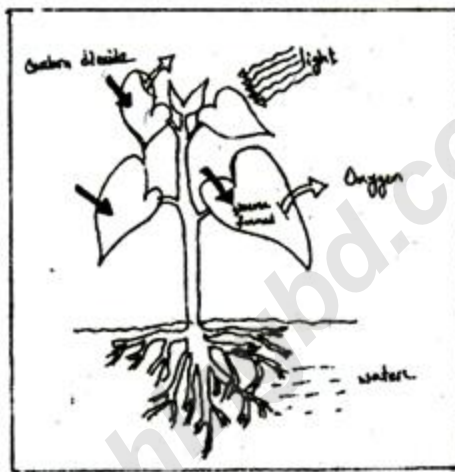
(Answer any four of the following Questions)

1. ▶



- What is reductional division? 1
- Where does meiosis take place in the plant kingdom? 2
- Write down the characteristics of the step next to the step of the stem. 3
- If the type of cell division of the stem is abnormal that will be very dangerous for human. Explain it. 4

2. ▶



Answer the following questions in light of the above figure:

- What is photorespiration? 1
- Why light is required in the process of photosynthesis? 2
- Explain the light independent phase of the process shown in the stem figure. 3
- Describe the role of this process for supplying of food for animal kingdom and maintaining ecological balance. 4

3. ▶ Transpiration is the process of evaporation of water into atmosphere from the leaves and stems of plants. Water is necessary for plants but only a small amount of water taken up by the roots is used for growth and metabolism. The remaining water is lost by transpiration process. Leaf surfaces are dotted with pores called stomata, transpiration occurs through these stomatal apertures. Transpiration cools plants, changes osmotic pressure of cells, and enables mass flow of mineral nutrients and water from roots to shoots.



- a. What is osmosis? 1
- b. What is the necessity of translocation in plants life? 2
- c. Describe the different types of transpiration process with relevant diagrams. 3
- d. 'Transpiration is a necessary evil'. Explain the statement. 4
- 4.► Sadman and Sadif both are two brothers. During breakfast Sadman like to eat porota and meat. Sadif like to eat bread with sugar.**
- a. What is chlorosis? 1
- b. Explain what do you mean by gastric ulcer? 2
- c. Describe the food digestion process which is liked by Sadman. 3
- d. Who need more enzyme for digestion of food among two brothers in the stem? Analyze it. 4
- 5.► In Biology class students learnt about the components of ecosystem through the group discussion. In the same class lastly teacher also informed them birth of son child or daughter child not depend on mother.**
- a. What is nucleotide? 1
- b. Explain how a side effect of medicine causing colour blindness does. 2
- c. Which topic was learnt by the students through the group discussion in the stem? Explain it. 3
- d. Analyze with your logical opinion about the last information by the teacher in the class according to the stem. 4
- 6.► Now a day in our country huge number of people are suffering through kidney stone diseases. It is very painful disease but if people may alert about that anybody can remain escape from this complication.**
- a. What is pelvis? 1
- b. Explain the components of urine? 2
- c. Explain the structure of functional unit of mention organ in the stem. 3
- d. Analyze and evaluate the last sentence of the above stem. 4



## Model Question of SSC Examination 2016 All Board

Sub: **Biology** (MCQ)

Time: 35 minutes

Total Marks- 35

[Darken the circle (O) of the correct option from the following alternatives]

- Cell wall of mushroom made by—  
 (a) Lipid (b) Chitin  
 (c) Lignin (d) Suberin
  - Characteristics of Monera are—  
 i. Cell divides with binary fission  
 ii. Nutrition absorption through chemosynthesis  
 iii. Reproduces by conjugation  
 Which one is correct?  
 (a) i & ii (b) i & iii  
 (c) ii & iii (d) i, ii & iii
  - Which is the chemical components of chlorophyll molecule?  
 (a) Cl (b) C (c) Mg (d) O<sub>2</sub>
  - Potassium helps to plant—  
 i. absorb water  
 ii. to opening and closing stomata  
 iii. development and growth of root  
 Which one is correct?  
 (a) i & ii (b) i & iii  
 (c) ii & iii (d) i, ii & iii
  - Which food remains in the stomach for a long time?  
 (a) Protein (b) Carbohydrate  
 (c) Fat (d) Vitamin
  - Roughage has a role to—  
 i. reduce obesity  
 ii. increases amount of faces  
 iii. increases hungriness  
 Which one is correct?  
 (a) i & ii (b) i & iii  
 (c) ii & iii (d) i, ii & iii
  - What hormone is secreted by thymus gland?  
 (a) Thyroxine (b) Parathyroxin  
 (c) Thymoxine (d) Thyrotrapine
  - Lung is—  
 i. spongy ii. soft  
 iii. deep reddish  
 Which one is correct?  
 (a) i & ii (b) i & iii  
 (c) ii & iii (d) i, ii & iii
  - Gastric gland present in—  
 (a) Pharynx (b) Stomach  
 (c) Duodenum (d) Ileum
  - Intestinal juice contain—  
 i. Sucrase ii. Lactase  
 iii. Maltase  
 Which one is correct?  
 (a) i & ii (b) i & iii  
 (c) ii & iii (d) i, ii & iii
  - Which is the cause of tuberculosis?  
 (a) Virus (b) Bacteria  
 (c) Fungi (d) Protozoa
  - Which one is applicable for trachea?  
 (a) Short tube  
 (b) Bony rings  
 (c) Voluntary muscle  
 (d) Mucus membrane
- Read the following passage and give the answer of the question No. 13 & 14.  
 After kidney failure blood of Mr. Farid purifying by expensive scientific method. But lacking of tissue matching he could not receive another treatment method which is permanent.
- Symptoms of above disease are—  
 i. Difficulty of urination  
 ii. Increased creatinine in blood  
 iii. Frequent passing of urine  
 Which one is correct?  
 (a) i & ii (b) i & iii  
 (c) ii & iii (d) i, ii & iii
  - Which method of treatment cannot capable to receive by Mr. Farid?  
 (a) Dialysis  
 (b) Uteroscopic  
 (c) Kidney transplantation  
 (d) Ultrasonic lithotripsy
  - Reflex action means—  
 i. sudden response  
 ii. autonomic reaction  
 iii. brain controlled reaction  
 Which one is correct?  
 (a) i & ii (b) i & iii  
 (c) ii & iii (d) i, ii & iii
  - Which year DNA replication proposed?  
 (a) 1954 (b) 1953  
 (c) 1958 (d) 1961
  - Genetical disorder are—  
 i. cannot detect any colour  
 ii. red blood cells are disintegrated  
 iii. cannot see in dim light  
 Which one is correct?  
 (a) i & ii (b) i & iii  
 (c) ii & iii (d) i, ii & iii
  - Which one is decomposer?  
 (a) Bacteria (b) Algae  
 (c) Zooplankton (d) Grasshopper



19. Which one is the function of ribosome?

- (a) to produce energy
- (b) to engulf microorganism
- (c) to produce energy
- (d) to synthesize protein

20. What is the first stable compound of  $C_3$  Cycle?

- (a) Ribulose 1, 5 diphosphate
- (b) 3- Phosphoglyceric acid
- (c) 3-Phosphoglyceraldehyde
- (d) Dihydroxyaceton phosphate

21. Which organelle is found in the prokaryotic cell?

- (a) Plastid
- (b) Centrosome
- (c) Ribosome
- (d) Lysosome

22. Products of anaerobic respiration—

- i. Ethyl alcohol
- ii. Carbon dioxide
- iii. Water

Which one is correct?

- (a) i & ii
- (b) ii & iii
- (c) i & iii
- (d) i, ii & iii

23. What is name of V-shaped chromosome in anaphase stage?

- (a) Metacentric
- (b) Sub-Metacentric
- (c) Acrocentric
- (d) Telocentric

24.  $3 NADH_2 / 3NADH + H^+ = ?$

- (a) 3  $FADH_2$
- (b) 6 ATP
- (c) 9 ATP
- (d) 3 GTP

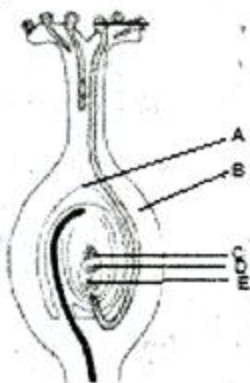
25. A carpel consists of—

- i. Ovary
- ii. Style
- iii. Sigma

Which one is correct?

- (a) i & ii
- (b) ii & iii
- (c) i & iii
- (d) i, ii & iii

Look at the stem and answer the question no. 26 & 27.



26. Part 'D' of embryo sac takes part in the formation of—

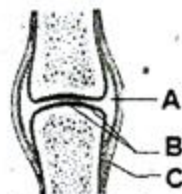
- (a) Embryo
- (b) Cotyledon

- (c) Endosperm
- (d) Zygote

27. Which one from stem figure turns into a seed?

- (a) A
- (b) B
- (c) C
- (d) D

Look at the stem and answer the question no. 28 & 29.



28. the given diagram is A—

- (a) Bone joint
- (b) Synovial Joint
- (c) Hinge Joint
- (d) Articulation

29. Which one is applicable in case of labeled 'B'?

- i. Soft and elastic
- ii. Enclosed by perichondrium
- iii. Lacunae present

Which one is correct?

- (a) i & ii
- (b) ii & iii
- (c) i & iii
- (d) i, ii & iii

30. Osteoporosis develops due to deficiency of—

- (a) P
- (b) K
- (c) Ca
- (d) Na

31. Which one of the following can prevent cancer?

- (a) Insulin
- (b) Penicillin
- (c) Interferon
- (d) Vaccine

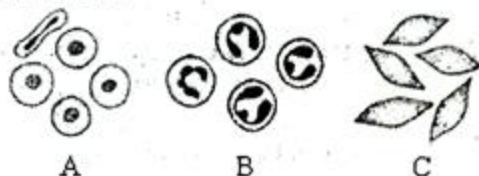
32. What are the characteristics of cross-pollination?

- i. Emergence of new characters
- ii. Production of highly vigorous seeds
- iii. Less wastage of pollen

Which one is correct?

- (a) i & ii
- (b) ii & iii
- (c) i & iii
- (d) i, ii & iii

Look at the stem and answer the question no. 33 & 34.



33. Which one of following is involved with phagocytosis?

- (a) A
- (b) B
- (c) C
- (d) A & B

34. What are features of 'B'?

- i. Non-nucleated
- ii. Colourless
- iii. Irregular shaped

Which one is correct?

- (a) i & ii
- (b) ii & iii
- (c) i & iii
- (d) i, ii & iii

35. Which one is  $C_4$  plant?

- (a) Mango
- (b) Maize
- (c) Papaya
- (d) Rice

1	(b)	2	(a)	3	(c)	4	(d)	5	(c)	6	(a)	7	(a)	8	(a)	9	(b)	10	(b)	11	(b)	12	(d)	13	(a)	14	(c)	15	(a)	16	(b)	17	(a)	18	(a)	19	(d)	20	(b)		
21	(c)	22	(a)	23	(a)	24	(c)	25	(a)	26	(c)	27	(a)	28	(b)	29	(d)	30	(c)	31	(b)	32	(a)	33	(b)	34	(b)	35	(b)												