

## Model Question of SSC Examination 2016 All Board

Sub: Biology (Creative)

Time: 2 Hours 10 minutes

Total Marks-40

(Answer any four of the following Questions)

1. ► Cdt. Hasib likes to eat rice. He gets energy from the glucose which is present in rice. His younger brother asked him how plants get energy, so that plant can grown up. He inform his brother-plant gets energy from glucose which is broken down in respiration.

- What is photolysis? 1
- What do you mean by  $C_4$  plant? 2
- How energy is produced from 2-molecule of glucose which is eaten by Cdt Hasib in Kreb's cycle?-Explain it. 3
- What will be the impact of plants if the mentioned process is hampered-Evaluate it. 4

2. ► Plants prepare food materials by process of photosynthesis. It has two phases. In the first phase, they require sun light. So, it happens at day time. Here no food is produced, but energy is produced which is utilized in the second phase.

- What is osmosis? 1
- What will be the measures if crops leaves tern yellow? 2
- How is energy produced in the above process? Describe. 3
- Without this process, no organism will exist--Give your opinion. 4

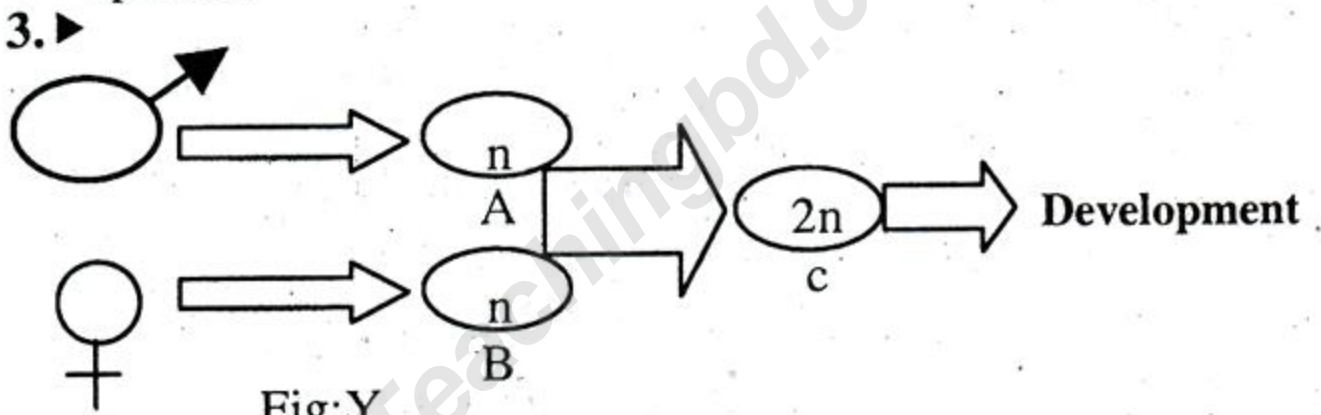
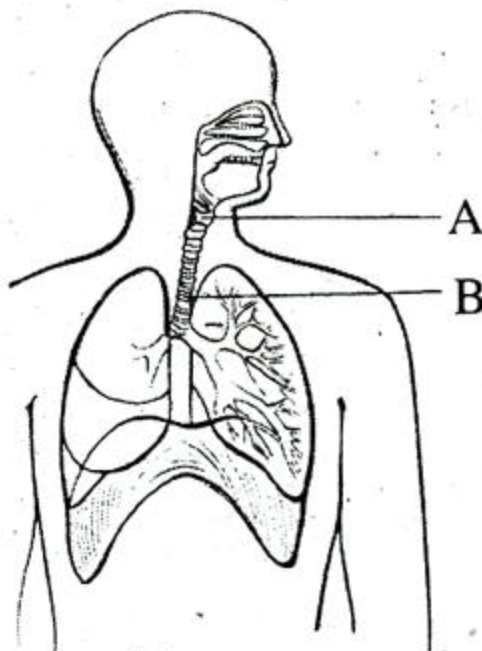


Fig:Y

- What is placenta? 1
- What are the functions of placenta? 2
- From the above stem express the A, B, C. Which hormones are related to this process? 3
- Describe the whole process given in the stem from first to last step of the fig. Y. 4

4. ►



Fig

- a. What is diaphragm? 1
- b. Write the causes of Pneumonia and tuberculosis. 2
- c. Describe the part A and B of the fig. Y with their functions. 3
- d. How does the whole organ work? Describe it with its two steps. 4

5. ► Zakia visited Modhupur forest with his family. There she found different types of plants and animals like-toads, snakes, birds etc. She was eating launch at the open grass field and suddenly a grass hopper feel down there. She became astonished.

- a. What is ecosystem? 1
- b. What do you mean by decomposer? 2
- c. Make a possible food web of Modhupur forest that Zakia observed. 3
- d. Modhupur forest has a great role for keeping the balance of environment-Analyze it. 4

6. ►

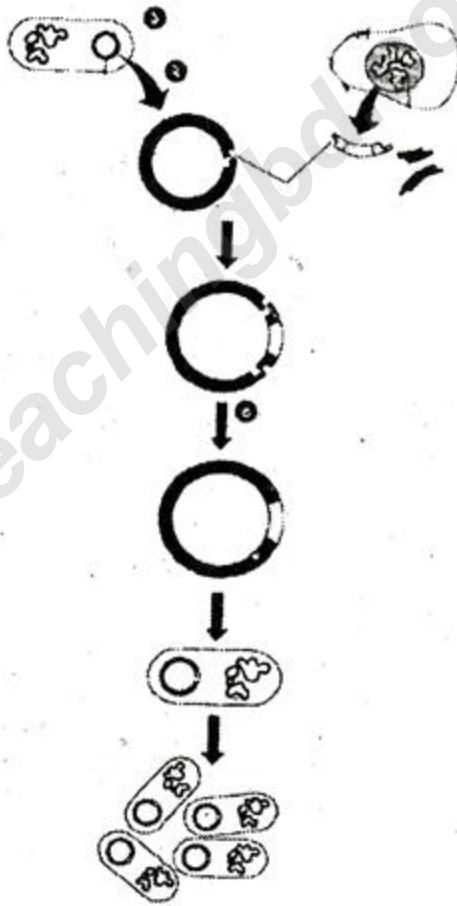


Fig :X

- a. What is GMO? 1
- b. How is culture medium prepared? 2
- c. Describe the above process with figure that indicated in the fig:X. 3
- d. Fig:X create a great revolution in human civilization-Analyze it. 4

## Model Question of SSC Examination 2016 All Board

Sub: **Biology** (MCQ)

Time: 35 minutes

Total Marks- 35

[Darken the circle (O) of the correct option from the following alternatives]

1. After ..... of Puberty, girls gain the ability of reproduction.

- (a) 1-2 month      (b) 1-2 years  
(c) 2-3 months    (d) 2-3 years

2. Menopause is normally occurs in woman aged —.

- (a) 40-50 years  
(b) 45-55 years  
(c) 50-60 years  
(d) 40-60 years

3. Fetus develops in uterus for — weeks.

- (a) 40-50              (b) 30-50  
(c) 38-40             (d) 48-50

4. Placenta is formed—

- i. Within 14 weeks after fertilization  
ii. To connect fetus and mother body  
iii. To produce some hormones

Which one is correct?

- (a) i & ii              (b) i & iii  
(c) ii & iii            (d) i, ii & iii

'X' is a sexually transmitted killer disease. If anyone infected by it he/she will ultimately die. about 2.5 million people are infected by it. It gradually destroys immune system of body.

Now answer the question (5-7)

5. What is 'X'?

- (a) Cancer            (b) Anemia  
(c) AIDS              (d) Hemophilia

6. Which is the symptom of 'X'?

- (a) Gain of body weight  
(b) Slimy cough  
(c) Puffy face  
(d) Vomiting

7. 'X' is caused for —

- i. HIV virus  
ii. Destroy of WBC  
iii. Physical relation

Which one is correct?

- (a) i & ii              (b) i & iii

- (c) ii & iii            (d) i, ii & iii

8. Reflex action is —

- i. Automatic reaction  
ii. Sudden response  
iii. Controlled by spinal cord

Which one is the correct answer?

- (a) i & ii              (b) i & iii  
(c) ii & iii            (d) i, ii & iii

9. Which gland can secrete several hormones?

- (a) Pituitary            (b) Thyroid  
(c) thymus             (d) Parathyroid

10. Which is an endocrine gland?

- (a) Liver              (b) Pancreas  
(c) Gall bladder      (d) Salivary gland

11. How many types of blood vessels are present in body?

- (a) One                (b) Two  
(c) Three              (d) Four

12. Average viability of platelets is—

- (a) 120 days          (b) 5-10 days  
(c) 20 days            (d) 4-12 days

13. Which layer is thickest of Heart wall?

- (a) pericardium      (b) Epicardium  
(c) Myocardium      (d) Endocardium

14. Generally our blood contains 90% — type of cholesterol.

- (a) LDL                (b) HDL  
(c) Triglyceride      (d) Protein

An organ 'X' is known as voice box in our respiratory system. It has various function in both digestion and respiration.

Now answer the question (15-16)

15. What is the name of 'X'?

- (a) Pharynx            (b) Larynx  
(c) Glottis             (d) Epiglottis

16. A part of 'X' acts as a lid which covers the opening of both respiratory and digestive tract. What is the name of that part?

- (a) Pharynx            (b) Larynx  
(c) Glottis             (d) Epiglottis

17. Oxygen → Lungs → Alveoli → ? → Blood → Heart

What is '?' in the flow chart?

- (a) Bicarbonate (b) Artery  
(c) Diaphragm (d) Lymph

18. Dust or smoke is causal agent of—

- i. Asthma  
ii. Bronchitis  
iii. Pneumonia

Which one is correct answer?

- (a) i & ii (b) i & iii  
(c) ii & iii (d) i, ii & iii

19. Who announced the theory of Natural Selection along with Darwin?

- (a) Bassham (b) Prain  
(c) Wallace (d) Krebs

20. Scientists considered — are the first molecule of life.

- (a) HCL  
(b) Amino acid  
(c) Nitric acid  
(d) Sulphuric acid

21. Which on is the function of plasma membrane?

- (a) to store food.  
(b) to produce Lysosome  
(c) to control the exchange of material  
(d) electron transport

22. Which is not a part of nucleus?

- i. cell membrane  
ii. nucleolus  
iii. chromosome

Which one is correct?

- (a) i (b) i & ii  
(c) ii & iii (d) i & iii

23. In which stage, from the two poles of animal cell, aster rays come out from the centrioles?

- (a) prophase (b) pro-metaphase  
(c) metaphase (d) anaphase

24. In the human body which disease is fromed by the virus?

- (a) Tuberculosis (b) pneumonia  
(c) Cholera (d) Polio

25. Wall with perforation of sieve tube is

called —.

- (a) companion cell (b) phloem fibre  
(c) sieve plate (d) sieve tube

26. Fern leaves are called —.

- (a) capsule (b) rhizoid  
(c) frond (d) protonema

27. Which one is absent in T2-virus?

- (a) protein (b) DNA  
(c) RNA (d) spike

28. Due to the deficiency of which element flower and fruits may fall down?

- (a) nitrogen (b) potassium  
(c) phosphorus (d) magnessium

29. The stomata open when guard cells—.

- (a) loose turgidity (b) become flaccid  
(c) become turgid (d) both a & c

30. Due to deficiency of which elements photosynthesis get hampered?

- (a) P (b) Mg  
(c) Mn (d) B

31. How many ATP are produced in anaerobic respiration from one molecule of Glucose?

- (a) 5 (b) 4  
(c) 3 (d) 2

32. What type of plants are Sugar cane, Maize and grass?

- (a) C<sub>3</sub> plant  
(b) Gymnospermic plant  
(c) Dicot plant  
(d) C<sub>4</sub> plant

33. Electron transport system occurs in —.

- (a) cytoplasm (b) protoplasm  
(c) mitochondria (d) none

34. Which gas in harmful for Ozone layer.

- (a) NO (b) CNC  
(c) CFC (d) CO

35. which of the following is known as tiger fern?

- (a) Khalshi  
(b) Hudu  
(c) Ora  
(d) Pteris