

Model Question of SSC Examination 2016 All Board  
 Sub: Biology (Creative)

Time: 2 Hours 10 minutes

Total Marks-40

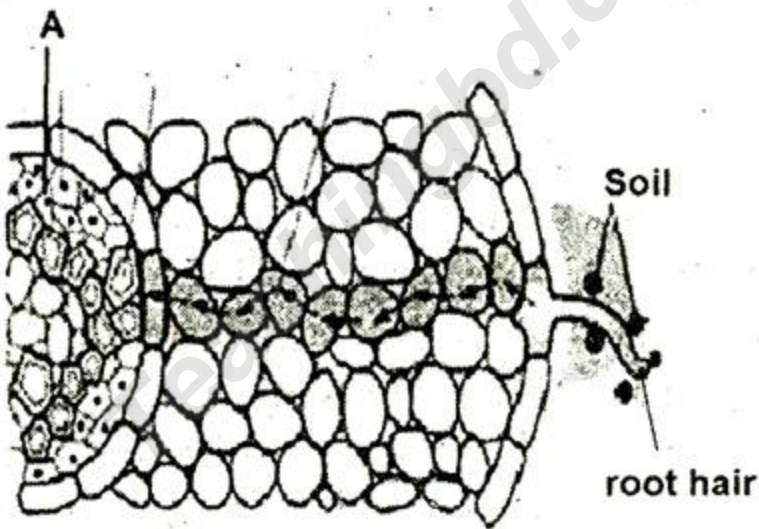
(Answer any four of the following Questions)

1. ▶



- a. What is autosome? 1
- b. What is heredity? 2
- c. Describe the structure and importance of the material shown in the figure. 3
- d. Which process indicates in the stem? Explain it. 4

2. ▶



- a. What is diffusion? 1
- b. What do you mean by translocation? 2
- c. Which process indicate in the stem? Explain it. 3
- d. Describe the translocation of labeled part 'A'. 4

3. ▶

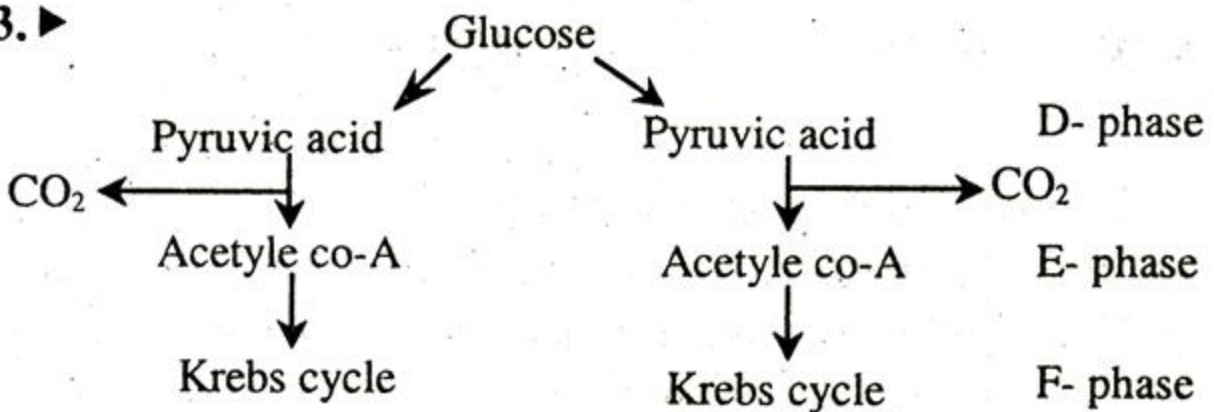


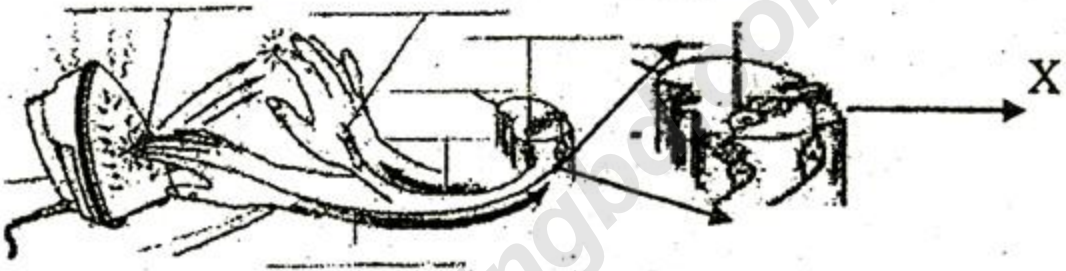
Fig-A

- What do you mean by respiratory substance? 1
- What is chlorosis? 2
- Describe how energy is reproduced in the D, E and F phase. 3
- Analyze comparative significance between Fig-A and anaerobic respiration. 4

4. ► Dr. Rahman produced a huge amount of disease free plant lets not by traditonal process but by a special process in his lab.

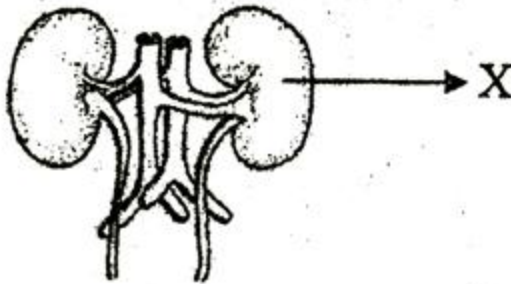
- What is DNA replication? 1
- Write the steps of tissue culture. 2
- Explain the technique followed by Dr. Ishtiak for producing orchid plant lets. 3
- How the above process can use in agriculture purpose? Explain. 4

5. ► Observe the following figure and answer the following questions.



- What is Myolin? 1
- What is meant by Autonomic Nervous system? 2
- The action of above figure occurs in unconscious way - Explain. 3
- Analyze-X act as an impulse transmitter. 4

6. ► Observe the following figure and answer the following questions.



- What is GMO? 1
- What is meant by synovial joint? 2
- Stem plays a vital role in balancing water level to your body. Analyze. 3
- How X works in your body? Explain with logic. 4

## Model Question of SSC Examination 2016 All Board

Sub: **Biology (MCQ)**

Time: 35 minutes

Total Marks- 35

[Darken the circle (O) of the correct option from the following alternatives]

- The division of cytoplasm is called——.  
 (a) caryokinesis (b) cytokinesis  
 (c) metakinesis (d) synthesis
  - Endosperm is——.  
 (a) Haploid (b) Diploid  
 (c) Triploid (d) None of them
  - When glucose is incompletely oxidized in absence of oxygen outside the cell is known as——.  
 (a) Anaerobic respiration  
 (b) Reduction  
 (c) Fermentation (d) Oxidation
  - Which one is sort day plant?  
 (a) Litchi (b) Dhalia  
 (c) Jhinga (d) Sunflower
  - Which hormone is used for the formation of seedless fruit?  
 (a) Gibberellin (b) Cytokinin  
 (c) Abscisic acid (d) Auxin
  - How many  $NADH_2$  Produced in Acetyl Co-A  
 (a) 2 (b) 3 (c) 4 (d) 5
  - Cell wall of bacteria consists of——.  
 i. Cellulose ii. Protein  
 iii. Lipid  
 Which one is correct?  
 (a) i & ii (b) i & iii  
 (c) ii & iii (d) i, ii & iii
  - What is the three cells called near the micropyle?  
 (a) Egg apparatus (b) Carpel  
 (c) Ovary (d) Stigma
  - Adenine — Thymine is connected by——  
 i. hydrogen bond ii. double bond  
 iii. triple bond  
 Which one is correct?  
 (a) i & ii (b) i & iii  
 (c) ii & iii (d) i, ii & iii
  - Which one is scientific name of rice plant?  
 (a) *Mangifera indica*  
 (b) *Oryza sativa*  
 (c) *Apis cerana*  
 (d) *Corchorus capsularis*
  - Function of lysosomes are——  
 i. destroy parasites  
 ii. maintain osmotic balance of the cell  
 iii. participate in cellular digestion  
 Which one is correct?  
 (a) i & ii (b) i & iii  
 (c) ii & iii (d) i, ii & iii
  - Which one is the first stable compound of calvin cycle?  
 (a) ribulose 1, 5 diphosphate  
 (b) Keto acid  
 (c) 3 phosphoglyceric acid  
 (d) 3 phophoglycereldehyde
- Read the following stem and answer the question 13 and 14 :
- On the way to her village house, Ruhi saw a man extracting fibers from a-jut plant.
- What kind of tissue is being collected, mentioned in the stem above?  
 (a) parenchyma  
 (b) collenchymas  
 (c) chlorenchyma  
 (d) sclerenchyma
  - The character of the tissue being collected in the stem is——  
 i. cell wall is lignified  
 ii. cell wall is irregularly thickened  
 iii. protoplasm is absent in the cell  
 Which one is correct?  
 (a) i & ii (b) i & iii  
 (c) ii & iii (d) i, ii & iii
  - In whcih stage bi-polar spindle apparatus is developed?  
 (a) Metaphase (b) Anaphase  
 (c) Pro-metaphase (d) Telophase
  - If any food chain is stretched from the dead organisms, then it is called ——  
 (a) parasitic food chain  
 (b) predator food chain  
 (c) saprophytic food chain  
 (d) heterotrophic food chain
  - Which enzyme joins the segments of DNA choppeds?  
 (a) lipase (b) ligase  
 (c) starpase (d) Restriction
  - Implantation of embrio occurs in——  
 (a) Ovary (b) Uterus  
 (c) Oviduct (d) Stomach
  - Centrioles are absent in——  
 i. epithelial cell ii. nerve cell  
 iii. connective cell  
 Which one is correct?  
 (a) i (b) ii  
 (c) iii (d) i, ii & iii

20. Spinal nerves—  
 i. originate from cranium  
 ii. 31 pairs in number  
 iii. mixed in nature

Which one is correct?

- (a) i (b) ii  
 (c) iii (d) ii & iii

21. What is myocardium?

- (a) Wall (b) Covering  
 (c) Chamber (d) valve

Read the following passage and answer the question 22 and 23 :

In Rakib's body, blood goes right atrium by 'M' duct. After that it enters into lung by 'N' duct. Then from lung it goes to opposite chamber by 'O' duct. After that it spread all over the body with the help 'P' duct.

22. Left ventricle filled with blood by which duct .

- (a) M (b) N  
 (c) O (d) P

23. Oxygenated bloods found in the duct of —.

- i. N  
 ii. O  
 iii. P

Which one is correct?

- (a) i & ii (b) i & iii  
 (c) ii & iii (d) i, ii & iii

24. In which blood group there is no antibody?

- (a) A (b) B  
 (c) AB (d) O

25. Which is the fixed joint?

- (a) Wrist joint  
 (b) Joint of the back bone  
 (c) Joint of cranium (d) Elbows

Observe the following passage and answer the question 26 and 27 :



26. Which muscle is associated with the movement of X?

- (a) voluntary muscle  
 (b) non-voluntary muscle  
 (c) cardiac muscle (d) nerve tissue

27. The characteristic of X marked part type of muscle is —.

- (a) tubular and un-branched  
 (b) Tubular and one nucleus  
 (c) Branched and with transverse striations  
 (d) Consist more nucleus & contract slowly

28. Which gene is responsible to improve the quality and amount of sheep's far?

- (a) viral (b) Bacterial  
 (c) C (d) Cys N

29. Rheumatic disease is the cause of—

- (a) Osteoporosis (b) Arthritis  
 (c) Rickets (d) Hypertension

30. Brain hemorrhage is called—

- (a) Paralysis (b) Epilepsy  
 (c) Stroke (d) Parkinson

31. Kidney become gradually failure because of—

- i. Diabates ii. Diarrhoea  
 iii. Hypertension

Which one is correct?

- (a) i & ii (b) ii & iii  
 (c) i & iii (d) i, ii & iii

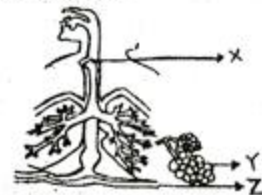
32. Skeletal system preserved—

- i. Calcium ii. Chloride  
 iii. Phosphorus

Which one is correct?

- (a) i & ii (b) i & iii  
 (c) ii & iii (d) i, ii & iii

Observe the following passage and answer the question 33 to 35 :



33. When Z Contract what happens?

- (a) Moves Upward  
 (b) Increase Volume of thoracic Cavity  
 (c) Important role in internal Respiration  
 (d) Bony Sheet Vibrated

34. In case of "Y" —

- i. site of gaseous exchange  
 ii. Air indirectly enter to it  
 iii. Double layer of epithelial tissue

Which one is correct?

- (a) i (b) ii & iii  
 (c) iii (d) i & iii

35. In case of "X" —

- i. Cover opening of Trachea  
 ii. Act as a lid  
 iii. Has function in Respiration

Which one is correct?

- (a) i (b) ii  
 (c) iii (d) i, ii & iii

1	(b)	2	(c)	3	(c)	4	(b)	5	(d)	6	(a)	7	(c)	8	(a)	9	(a)	10	(b)	11	(b)	12	(c)	13	(d)	14	(b)	15	(c)	16	(c)	17	(b)	18	(b)	19	(b)	20	(d)	
21	(a)	22	(c)	23	(c)	24	(c)	25	(c)	26	(a)	27	(a)	28	(b)	29	(b)	30	(c)	31	(c)	32	(b)	33	(b)	34	(d)	35	(b)											